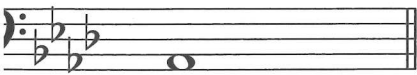


For each of these notes write a **higher** note to form the named **melodic** interval.
The key is A♭ major.

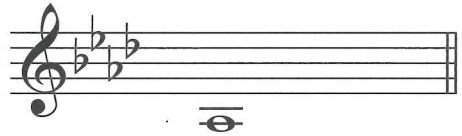
10



major 6th



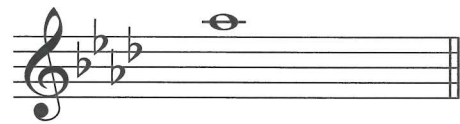
perfect 5th



perfect 8ve



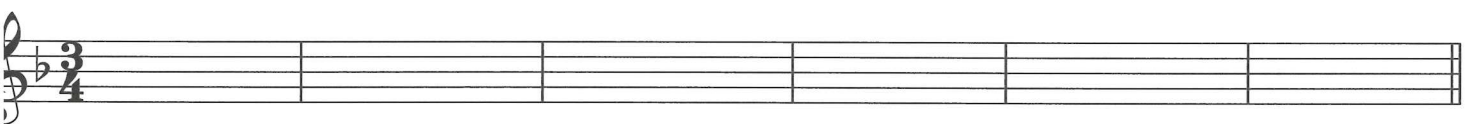
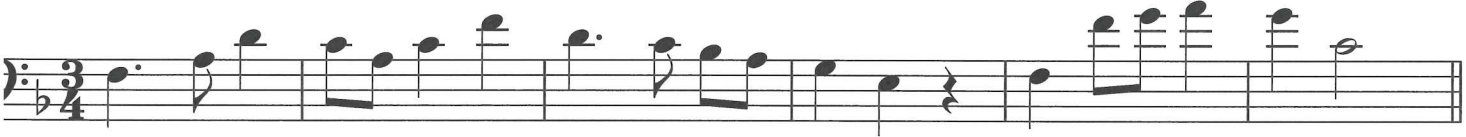
major 2nd



perfect 4th

Transpose this melody **up an octave**, using the treble clef as shown.

10



Mark one box for each term/sign, as shown in the first answer.

10

mpre means:

- simple, plain
- various
- identical
- short

f means:

- quiet
- moderately loud
- very loud
- loud

acc means:

- pause on the note or rest
- perform an octave higher
- accent the note
- staccato*: detached

r means:

- at a medium speed
- gradually getting quicker
- slowly, quick
- with

acc means:

- accent the note
- gradually getting quieter
- legato*: detached
- legato*: smoothly

sub means:

- simple, plain
- sad
- sustained
- suddenly